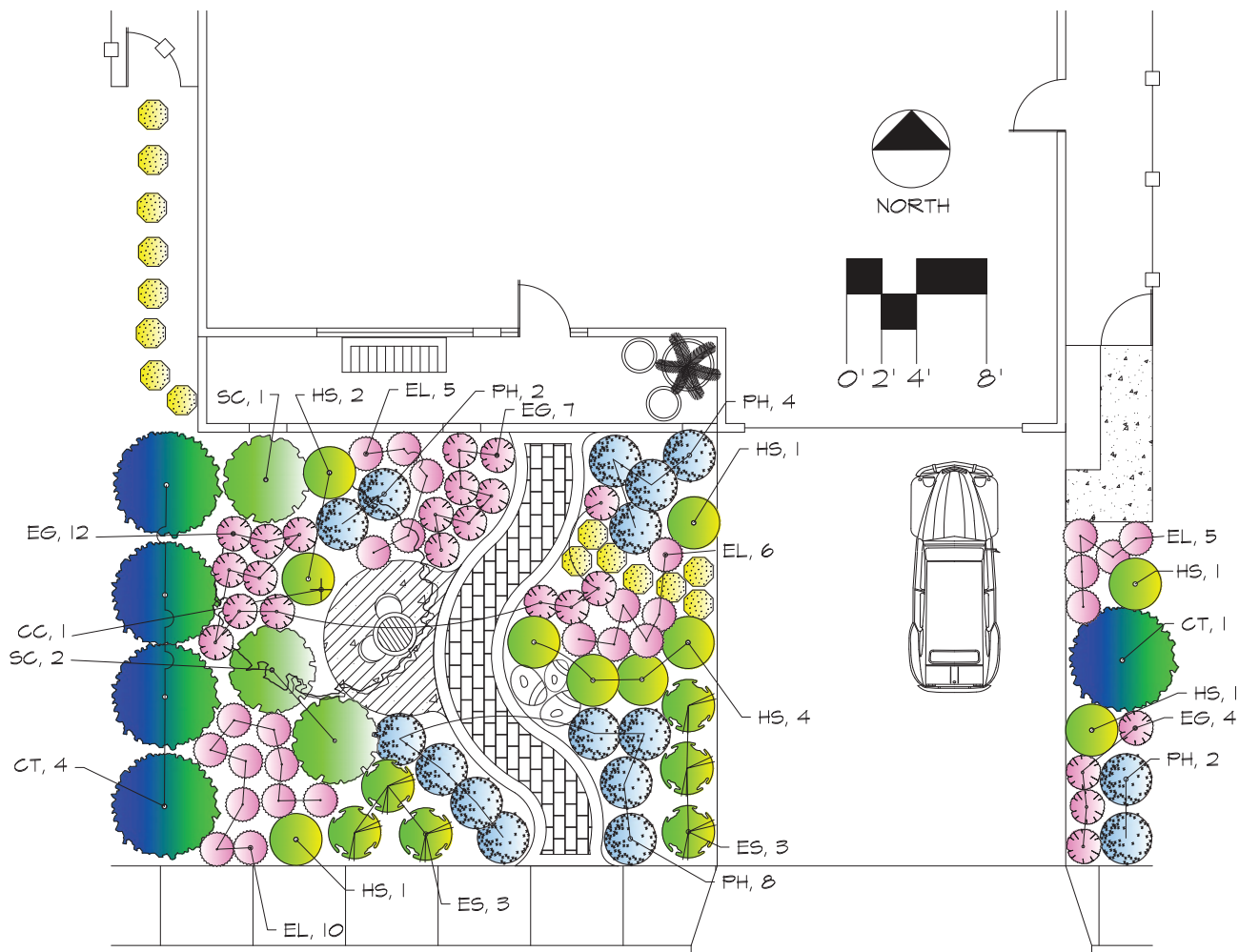
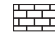









# Café Garden (Small, Sunny Yard)

Sustainable concept design for yards in Santa Clara Valley



-  Pervious pavers
-  Used wooden or iron cafe table
-  Bench made from recycled plastic
-  Existing concrete porch
-  Garden pots
-  Existing front door or garden gate
-  Concrete stepping stone
-  Group of bolders



**Rosy Buckwheat**  
*Eriogonum grande var. rubescens*



**California Fuchsia**  
*Epilobium septentrionale*  
'Wayne's Silver'



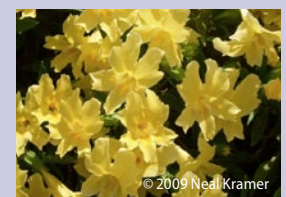
**Seaside Daisy**  
*Eriogonum glaucas* 'Wayne Roderick'



**Beard Tongue**  
*Penstemon heterophyllus*  
'Margarita Bop'



**Cleveland Sage**  
*Salvia clevelandii*



**Sticky Monkeyflower**  
*Mimulus aurantiacus*

## About the Concept Design Series

These designs are simple concepts to provide inspiration and ideas. Check with local nurseries, landscapers or other sustainable garden designers to help choose the best plants for your yard.

## Why We Liked This garden

### Showcase Features:

This design focuses on creating a low-cost, easy to maintain garden with flowers of various colors that are welcoming to bees, butterflies and hummingbirds. The design will fit a small front yard approximately 30 feet wide by 25 feet deep. This garden includes a small patio area for a bistro set.

All plants are drought-tolerant California native plants with low- or very low-water needs. The diverse plant palate supports a basic pest control technique — if one of the plants has a pest or disease, it won't easily spread all over your garden. The boulders will add additional habitat diversity to encourage other types of wildlife, and will add character. Plants are spaced to allow for growth so minimal shearing or pruning is needed. Plants also stay healthier when they are not constrained by space.

If planted in place of an existing lawn, this garden design meets many eligibility criteria for the Santa Clara Valley Water District rebate. However, check with the Water District for details of their procedure and criteria before planning your garden.

### Plants:

The entrance from the sidewalk is framed by Beard Tongue, which blooms with deep blue or purple flowers. The mellow rosy pink flowers of Rosy Buckwheat will provide a pretty view from your patio. The large patches of very low-growing Seaside Daisies will look almost like a groundcover. The broad, purple Daisies provide the perfect resting place for butterflies. A deciduous Western Redbud tree will produce beautiful deep pink flowers in spring and summer, and needs very little water. Yellow flowers of Sticky Monkeyflower will provide variety.

### Light:

This design needs full sun, as in a south facing garden.

## Café Garden Plant Legend (Small, Sunny Yard)

Symbol	Botanical Name	Common Name	Size	QTY	Notes (tall x wide)
<b>Trees</b>					
CC	<i>Cercis occidentalis</i>	Western Redbud	5 Gal	1	Native, 15'x10'
<b>Shrubs</b>					
CT	<i>Ceanothus thyrsiflorus</i> 'Skylark'	California Lilac	1 Gal	5	Native, 4'x6'
SC	<i>Salvia clevelandii</i>	Cleveland Sage	1 Gal	3	Native, 5'x5'
<b>Perennials</b>					
EG	<i>Eriogonum grande var. rubescens</i>	Rosy Buckwheat	1 Gal	23	Native, 2'x2'
EL	<i>Erigeron glaucus</i> 'Wayne Roderick'	Seaside Daisy	1 Gal	26	Native, 1'x2'
ES	<i>Epilobium septentrionale</i> 'Wayne's Silver'	California Fuchsia	1 Gal	6	Native, 1'x3'
HS	<i>Mimulus aurantiacus</i>	Sticky Monkeyflower	1 Gal	10	Native, 3'x3'
PH	<i>Penstemon heterophyllus</i> 'Margarita Bop'	Beard Tongue	1 Gal	16	Native, 2'x3'

*These planting designs are best not used within 3-5 miles of natural areas containing local native plants in order to protect native plant species.*

## Sustainable Gardening Resource List

For general installation, understanding of sustainable gardens, and other details, read the factsheets in the Green Gardens Healthy Creeks series. Each of those factsheets provides in depth information to guide homeowners through the process of installing sustainable gardens.



Funding for this project has been provided in full or in part through a grant awarded by the Department of Pesticide Regulation (DPR). The contents of this document do not necessarily reflect the views and policies of the Department of Pesticide Regulation, nor does mention of trade names or commercial products constitute endorsement or recommendation for use.

In accordance with the Americans with Disabilities Act, City of San José Environmental Services Department materials can be made available upon request in alternative formats, such as Braille, large print, audiotape or computer disk. Requests may be made by calling (408) 945-3000 (Voice) or (800) 735-2929 (CRS).

Printed on recycled paper. 0912/Q300/JY

## Watering Needs:

All of the plants in this garden have low water needs. Once plants are well established, summer water may not be needed. When occasional summer water is provided, many native plants may extend their blossoming period. Overwatering natives can cause death by root rot, or branches to die back from fungal diseases.

## Construction Notes for Sustainable Landscaping

- Avoid weeds by placing sheets of newspaper or cardboard boxes (sheet mulch) under the whole garden.
- Cover planted areas with woodchip mulch to retain soil moisture and prevent weed growth.
- Add high quality compost to improve soil health, drainage, and moisture retention.
- Even though your garden may look a little sparse in the beginning, the plants will fill in as they mature. The mature size of the plants is given in the plant list.
- Use recycled materials when possible, such as reclaimed brick for the pathways in this design.
- For pathways and patio, select permeable materials like pervious paver blocks, bricks, gravel, decomposed granite, or pervious concrete. Set pavers in sand and/or base rock instead of mortar to allow water to percolate into the soil.
- Use rainwater by diverting your downspouts into your garden.
- Retrofit sprinklers to drip irrigation. Rebates are available from Santa Clara Valley Water District for upgrading inefficient irrigation hardware.
- Grade soil so water drains away from the foundation of the house.
- Consider placing furniture in your front yard that allows active use of the yard.
- When landscaping close to creeks, sloughs, lakes, wild land parks, and open spaces, please consult with a designer familiar with California plant ecology and the precautions necessary to protect these wild lands.